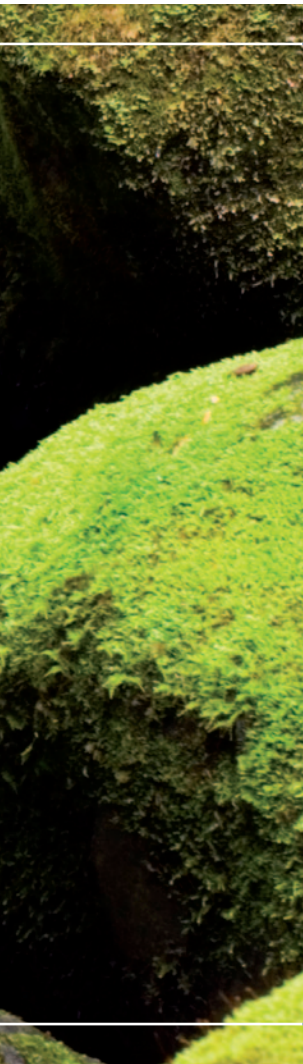


YOU DRINK
WE CARE







COMMITTED TO THE ENVIRONMENT

Water is one of our planet's most precious resources, and as our principle product, we are acutely aware of the importance of protecting it.

By choosing one of Eden's Water Solutions instead of using traditional PET bottles, our customers make a great environmental difference. Whatever your need or preference we have the solution!



AS THE INDUSTRY LEADER EDEN SPRINGS HAS SINCE 2007 PROMOTED AN ENVIRONMENTAL PROGRAM WITH THE OBJECTIVE OF REDUCING ITS CO2 EMISSIONS. OUR WAY TOWARDS BECOMING CARBON NEUTRAL STARTED WITH LIFECYCLE ASSESSMENTS TO OBTAIN OUR CARBON FOOTPRINT. THE FOLLOWING STEPS HAVE BEEN TO INITIATE CARBON REDUCTION ACTION PLANS AND OFFSETTING.

OUR ENVIRONMENTAL RESEARCH

In 2007 Eden piloted a product lifecycle assessment with the help of external consultants Quantis, a Swiss based expert. The results of this study provided a “roadmap” to drive the company’s environmental strategy and the first steps to improve our business processes and their environmental impact.

SAVE A MINIMUM OF 61% ON THE CARBON EMISSIONS LINKED TO YOUR DRINKING WATER SOLUTION WITH US!



BY CHOOSING ONE OF EDEN’S WATER SOLUTIONS INSTEAD OF USING TRADITIONAL PET BOTTLES, YOU AS A CUSTOMER MAKE A GREAT DIFFERENCE ON CLIMATE CHANGE.



CO2e EMISSIONS

527 KG CO2e

PLASTIC WASTE

55 KG

PET BOTTLES



CO2e EMISSIONS

207 KG CO2e

SAVING 61%

320 KG CO2e

PLASTIC WASTE

0,75 KG CO2e

SAVING 98%

55 KG CO2e

BOTTLED WATER COOLERS



CO2e EMISSIONS

164 KG CO2e

SAVING 69%

363 KG CO2e

PLASTIC WASTE

SAVING 100%

0 KG CO2e

PLUMBED-IN WATER COOLERS

EACH OF OUR CUSTOMERS HELP SAVE UP TO **363 KG CO2e** AND **55 KG** OF PLASTIC WASTE EVERY YEAR BY CHOOSING ONE OF OUR DRINKING WATER SOLUTIONS. HOW? TURN THE PAGE...

*Saving numbers calculated based on the average European customer consuming 70 liters of water per month.

LONGER BOTTLE LIFE

THE LIFECYCLE OF THE EDEN WATER BOTTLE

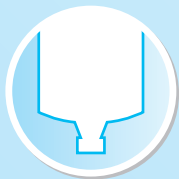
Eden Springs provides environmentally friendly hydration solutions to support the health of the work force and the health of the planet. Below you can find two key facts that show how Eden's solutions are environmentally more efficient compared to the traditional PET bottles.

- 🌱 1 EDEN BOTTLE DELIVERS **950 LITERS** OF WATER IN ITS LIFETIME!
- 🌱 EACH EDEN BOTTLE IS RE-USED **50 TIMES** ON AVERAGE **BEFORE BEING RECYCLED**



1

MANUFACTURING



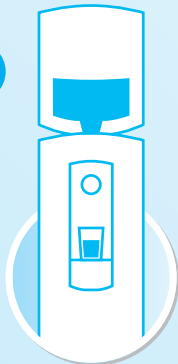
2

FILLING



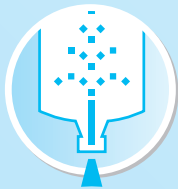
USE

3



4

CLEANING



5

RECYCLING



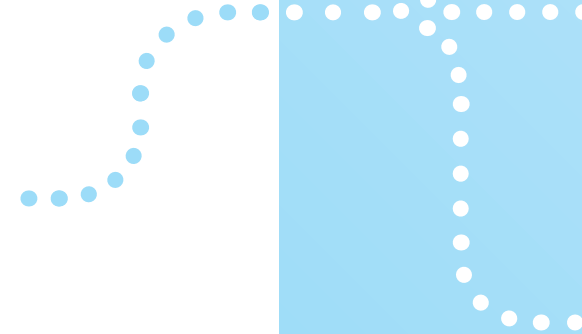
50
times

MORE EFFICIENT TRANSPORTATION ROUTES

The use of a routing system for all transport vehicles enables us to optimize our delivery service for efficiency and environmental impact. Routing is a dynamic tool that is updated regularly to maintain the most efficient delivery schedule. This ensures minimal travel distances and time, which minimize the environmental impact of the delivery service.



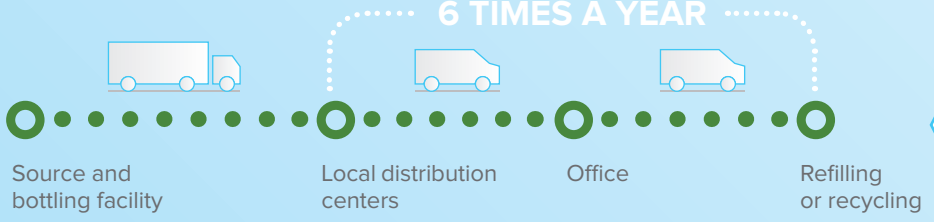
THE TRANSPORT ROUTING
EDEN WATER SOLUTIONS
compared to the
PET bottles solution



PET BOTTLES

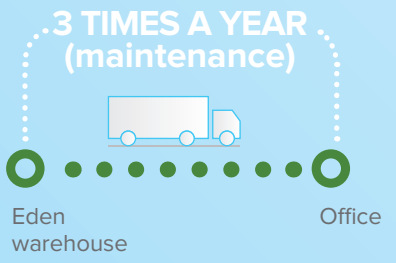


BOTTLED WATER COOLERS



🌱 Saving of **320 CO2e** by the average Eden customer per year*

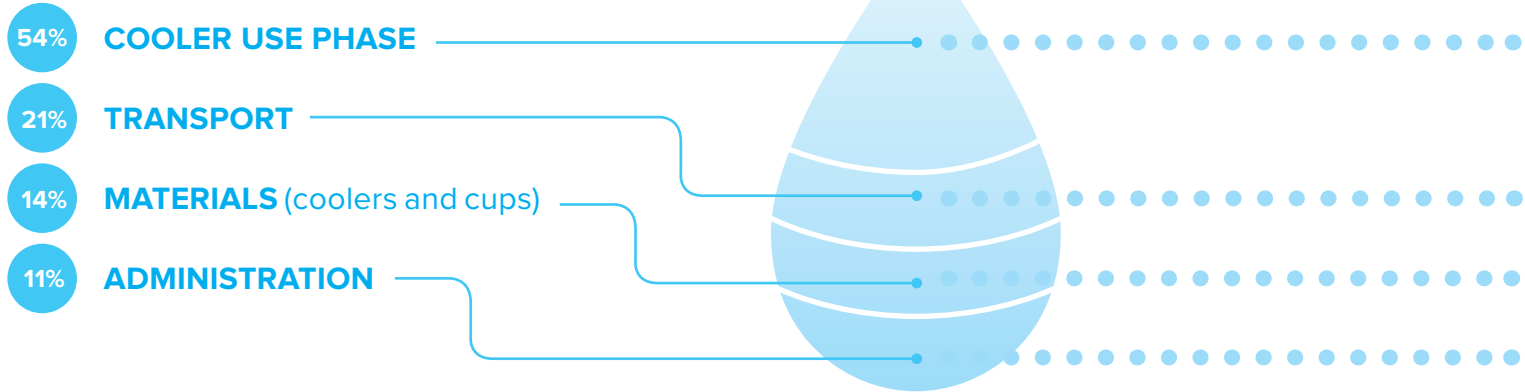
PLUMBED-IN WATER COOLERS



🌱 Saving of **363 kg CO2e** by the average Eden customer per year*

*An average Eden customer consumes 70 liters of water per month.

OUR CARBON FOOTPRINT



i For more information visit: www.edensprings.com

AND OUR MAIN ACTIONS TOWARDS BECOMING CARBON NEUTRAL



- By selecting all new coolers based on Energy Star recommendations we ensure a 50% less energy consumption of our coolers.



- To immediately compensate our carbon footprint and to build long-lasting renewable energy sources we participate in several offset projects in both Europe and further away.



- The use of a routing system for all transport vehicles that enables us to optimize our delivery service for fuel efficiency and environmental impact.
- The use of electric trucks in big cities in some markets.



- We offer bio-degradable and paper cups to all customers to reduce the use of ordinary plastic cups.



- The use of hand-held devices to reduce paper use (shipping bills, delivery bills etc.)
- The use of intranet, emailing and electronic faxing and billing to reduce paper use.
- Recycling of our office paper, newspapers, electronic equipment and batteries.

More ideas  on: www.edensprings.com

